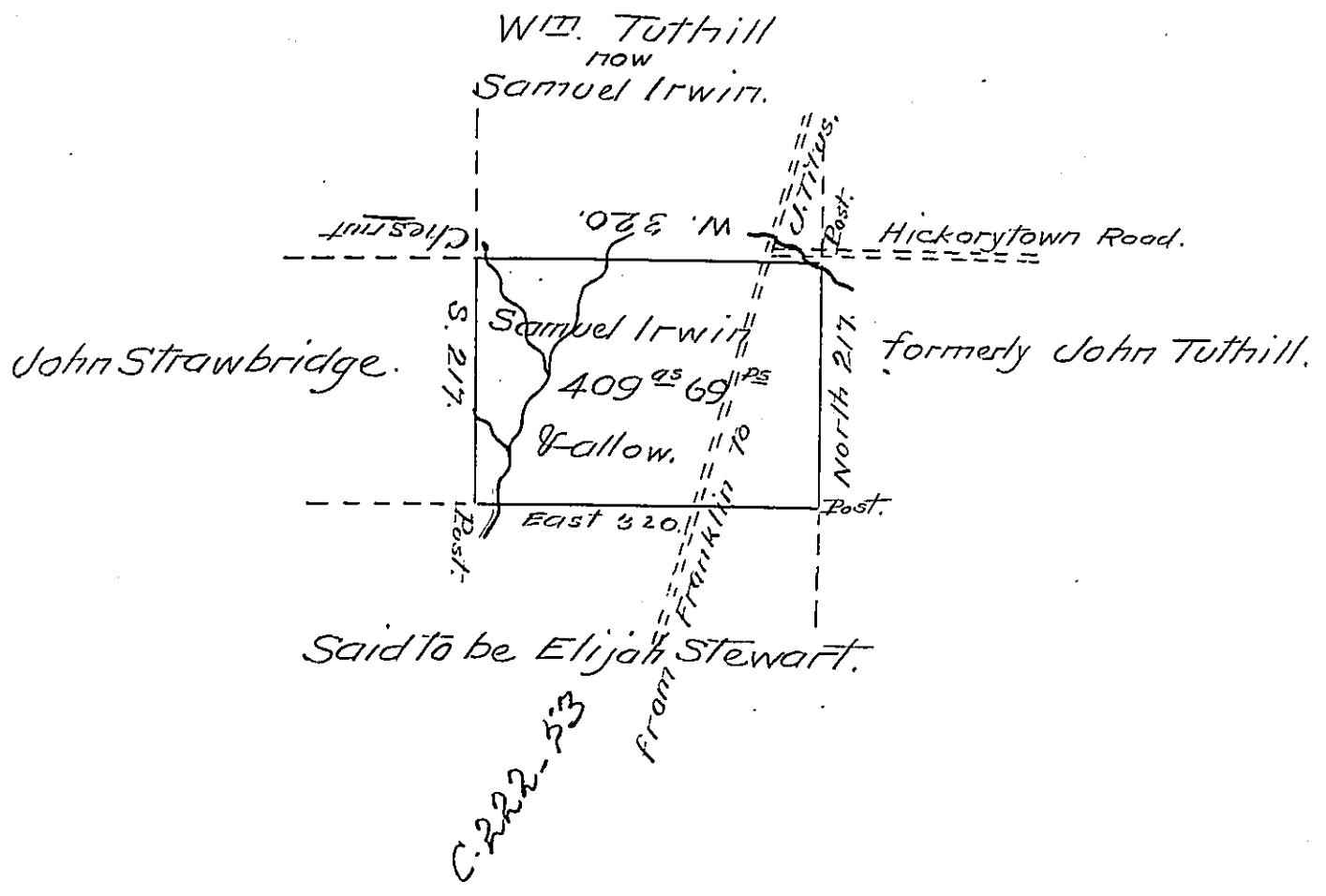


Pg 195



The Draft of a Tract of Land in Cherry Tree -
 Township Venango County on the Waters of Sugar
 Creek, Surveyed 4th of May 1816 in pursuance of
 a Warrant granted to Samuel Irwin Dated the
 tenth day of January 1816.

A. McCalmont D.S.

To Richard T. Leech Esq^r }
 Surveyor General }

IN TESTIMONY that the above is a copy of the original remaining on file in
 the Department of Internal Affairs of Pennsylvania, made
 conformably to an Act of Assembly approved the 16th day of
 February, 1833, I have hereunto set my Hand and caused
 the Seal of said Department to be affixed at Harrisburg,
 this twentieth day of April 1905.

George P. Brown
 Secretary of Internal Affairs.